

V O L IX

A R K

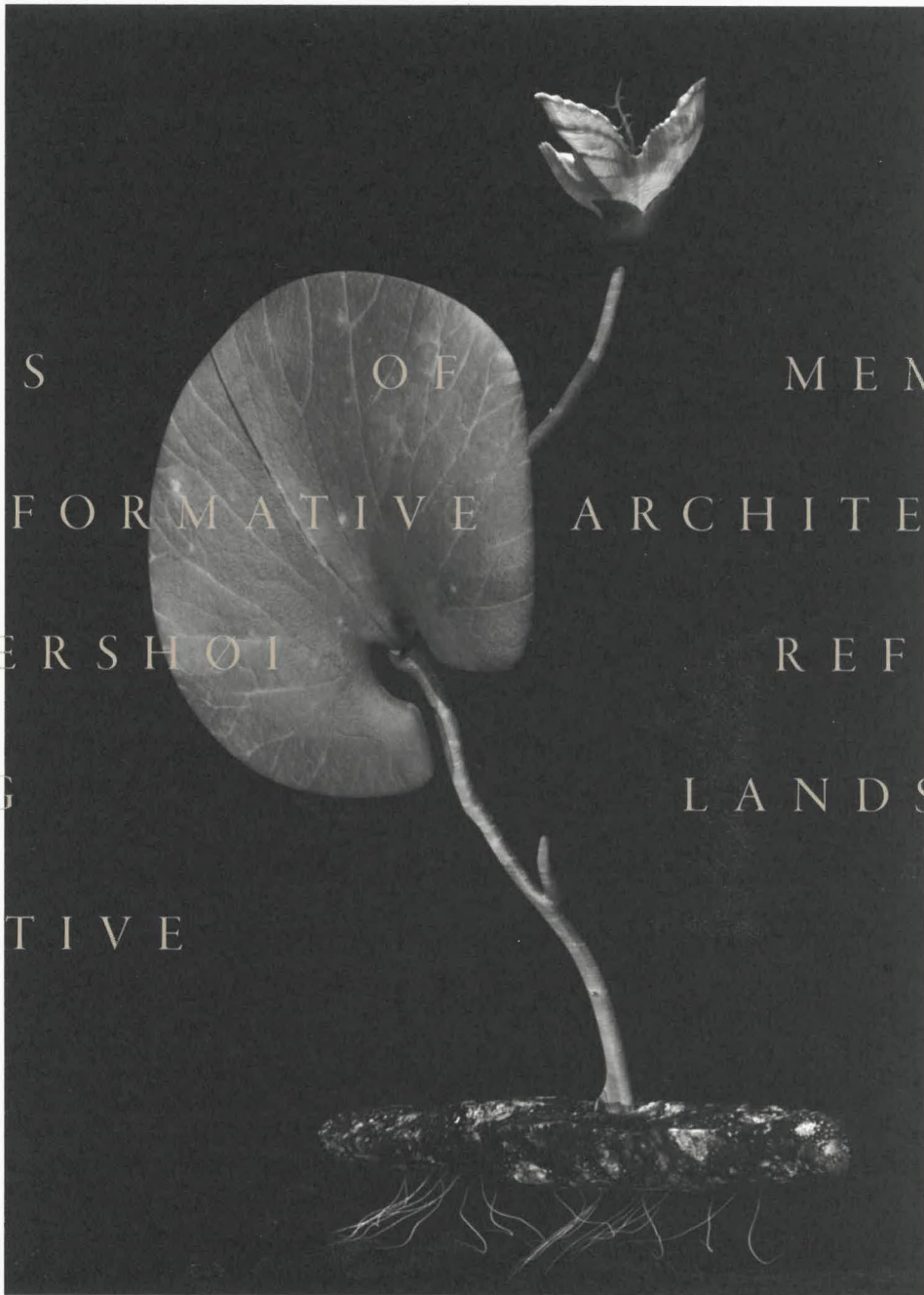
J O U R N A L

SPACES

OBJECTS

PEOPLE

MAKERS OF MEMORIES  
TRANSFORMATIVE ARCHITECTURE  
HAMMERSHOI REFRAMED  
LIVING LANDSCAPES  
INVENTIVE CRAFT





KITCHEN KNOW-HOW

Cesar kitchens are made near Venice in Italy with state-of-the-art technology and craftsmanship. The *Maxima 2.2* series is so versatile and adaptable that it is presented not as a series of components but rather for its potential to frame a portrait of its owner – refined intimacy, rational levity, open technology. In Casa Rospigliosi in Milan, a 1950s residence renovated by Studio Traccia, the kitchen is of lacquered metal and with anthracite Dekton top, perfectly contrasting the raw surfaces and structure of the project. CESAR

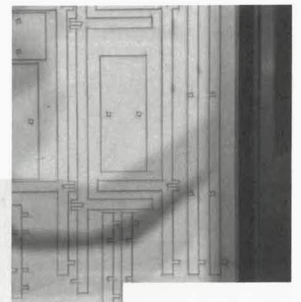
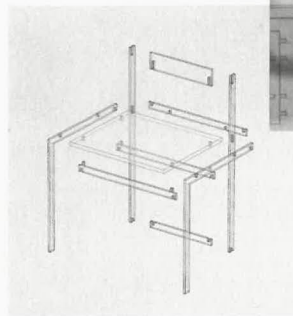
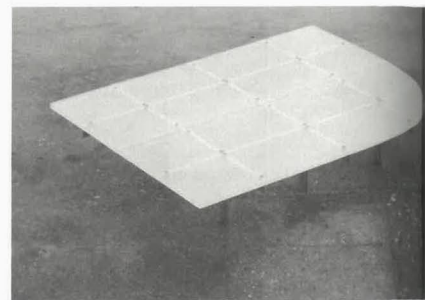
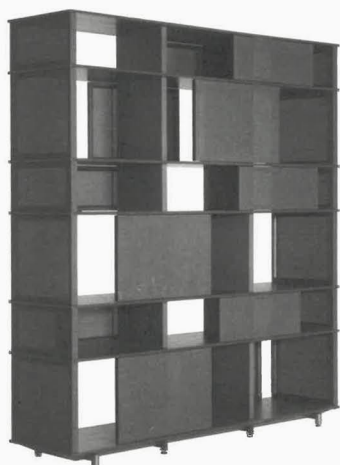
GRAPHIC LINES

While originally designed for a luxury hotel group, the BassamFellows *Slat Bench* sits comfortably in domestic or commercial interiors. An optional leather cushion adds a soft humanistic character to the severe parallel lines of the wood slats and the graphic crispness of the ebonised ash version. BASSAM FELLOWS



GREAT DIVIDE

Taking cues from hi-fi speakers the *Lloyd Tex* freestanding bookcase by Jean-Marie Massaud delicately balances structural wood against fabric panels made in the semi-transparent Techno fabric that slide on invisible horizontal tracks. The double-sided self-supporting bookcase can be used as a functional space divider emphasising the interplay of solids and voids, and light and dark. POLTRONA FRAU



FIT FOR SURFACE

A contrast of hard and soft materials the *202202* collection by August Hugo creates a visual balance between the romantic and the brutal. The furniture pieces, including a chair, a low table and a lamp, are composed of water-cut stainless-steel parts and recycled polypropylene sheets, and based around the idea of flat packing and fitting individual parts within the boundaries of a surface area. AUGUST HUGO